

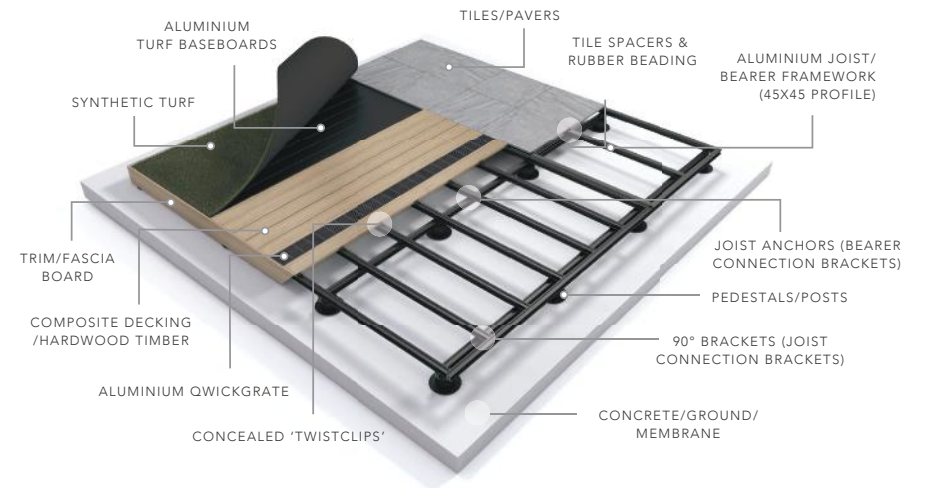


**QWICKBUILD®**

**OUTDURE®**

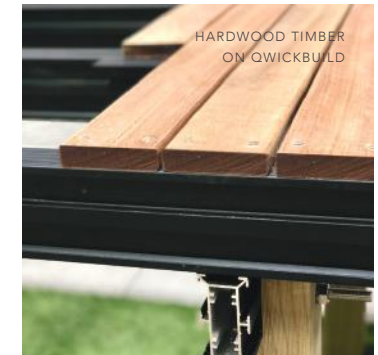
Outdure's QwickBuild is the only system with low height capabilities, that provides a level and stable, moisture-proof solution for supporting composite and hardwood timber decking, exterior structural tiles, synthetic turf, or a combination. The value-engineered joist/bearer profiles are designed to be configured to accommodate all deck heights. The versatile system can be used as a structure over waterproof membranes, concrete pads, existing pavers and natural ground.

**QWICKBUILD FRAMING SYSTEM SUMMARY**



OUTDURE MAKE IT EASY TO QUANTIFY – WE REVIEW YOUR PROJECT REQUIREMENTS AND PROVIDE FRAME, SURFACE + PRICING OPTIONS

QwickBuild profiles can be used as joists or bearers (joists support the surfaces, bearers support the joists, posts/pedestals support bearers). Profiles are determined by the 'finished deck level' (measurement from the top of the substrate to the top of the surface). Generally, the larger the profile the longer the span, and fewer supports are required – beneficial for decks over ground to minimise digging holes for posts. For low height decks, such as balconies where space is often limited, a smaller profile is required. QwickBuild also makes a level finish between the deck and internal floor easy, eliminating a 'step-down'.



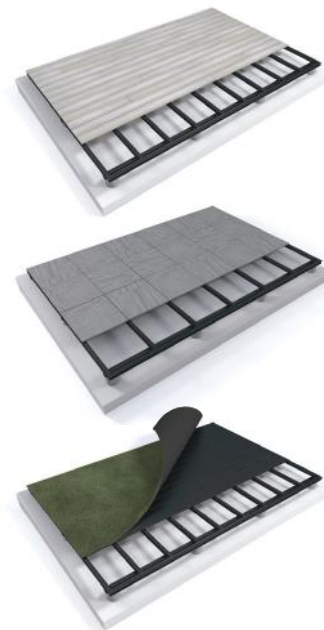
**QWICKBUILD®**

EXTERIOR FLOORING SYSTEM  
FOR DECK, TILE, TURF AREAS

Outdure's aluminium sub-structure system supports:  
Hardwood or composite decking, tiles, turf or a combination  
Moisture-proof, straight, level, light-weight, fast and easy to install  
Profiles for all finished deck heights from ultra low to raised

**OUTDURE®**

[www.outdure.com/qwickbuild](http://www.outdure.com/qwickbuild)



## ULTRA FAST, EASY INSTALLATION

DIY friendly or utilise our network of installers  
Supplied as kits or prefab frames (some regions)  
Easy to handle onsite, basic tools required

## COMPLIANT, LOW-RISK SOLUTION

Ideal over waterproofed areas as it is a 'floating' system and doesn't penetrate or compromise the membrane

## INDOOR-OUTDOOR FLOW

Easily achieve a seamless, flush finish between surfaces and interior-exterior floor levels

## ADD VALUE TO YOUR SPACE

A straight, level finish that lasts, year after year  
Save on installation costs and longterm maintenance

## MULTI-SURFACE INTEGRATION

For an integrated system with hidden fasteners and one warranty, select Outdure decking, tiles and/or turf

*Please note: If preferred, most independent surface range such as hardwood timber decking or other composites are also compatible and can be 'top fixed' on to the flat side of the profiles.*

## DURABLE AND LIGHT-WEIGHT

Manufactured from moisture-proof materials:  
Global Green Tag certified 6063-T6 structural aluminium framework and 304 stainless steel / PP components + height-adjustable pedestals

## STABLE AND LEVEL

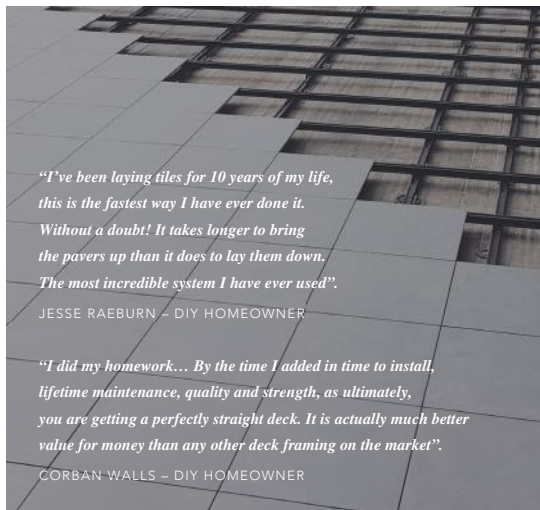
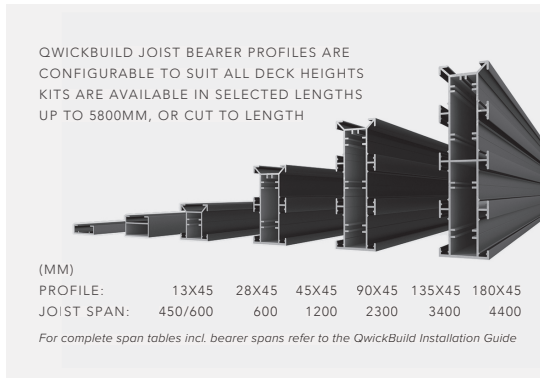
An engineered solution, up to 5.0kPa UDL, 4.5kN PL with long-span, high-load capacity resulting in the substantial reduction of pedestals/posts required

## VERSATILE WITH DESIGN FLEXIBILITY

The system allows for design details such as cantilevers, curves, stairs, seats, screens, planter boxes and more

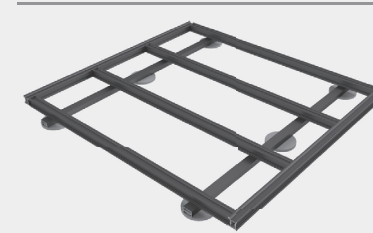
## ACCESS SOLUTION

Add QwickGrates, especially for decks under 100mm in height, as a convenient solution for ventilation and access to drains + services under the deck structure

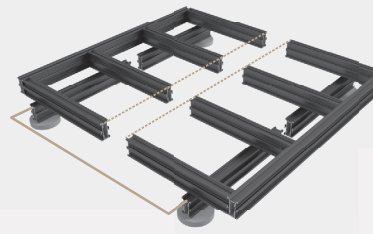


## EXAMPLES OF QWICKBUILD FRAME OPTIONS FOR LOW HEIGHT TO ELEVATED DECK HEIGHTS

- 45X45MM PROFILE AS BEARER (SPAN 1200MM)
- 3MM SHIM + ADD ANY OUTDURE SURFACE (23MM):  
= 71MM FINISHED DECK HEIGHT



- 45X45MM PROFILE AS JOIST (SPAN 1200MM)
- 28X45MM PROFILE AS BEARER (SPAN 600MM)  
+ ADD ANY OUTDURE SURFACE (23MM):  
= 96MM FINISHED DECK HEIGHT



- 90X45 PROFILE AS JOIST (SPAN 2300MM)
- 90X45 PROFILE AS BEARER (SPAN 1450MM)  
+ HEIGHT ADJUSTABLE PEDESTALS TO SUIT



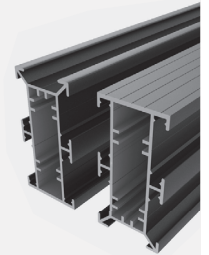
- 180X45 PROFILE AS JOIST (SPAN 4400MM)
- 180X45 PROFILE AS BEARER (SPAN 1950MM)  
+ POSTS TO SUIT HEIGHT

## ONE SYSTEM FOR ALL SURFACES SIMPLY FLIP THE PROFILE 180°

Use the 'channel up' edge of the profiles for Outdure composite decking / synthetic turf on QwickBuild baseboards / structural exterior tiles and QwickGrates with Qwickbuild fixings

For hardwood decking and most other composites, use the 'flat up' edge of the profile with screw fixings.

The revised profiles with the 'flat up' channel is designed to make installation of hardwood decking fast and efficient.



## GETTING STARTED

The Outdure team can help with all aspects of your project. A simple starting point is to share a plan, sketch, photos of the area. From there we can offer options specific to your requirements and budget. Outdure services include material supply and quantification including Outdure deck, tile, turf surface ranges, all accessories required, deck layout design and customised construction drawings if required.

## ONLINE RESOURCES

- Commercial and residential case studies
- Youtube videos including installation tips
- Installation guides for all Outdure products
- Technical information, such as:
  - QwickBuild Design Manual + span tables
- Product catalogues for all Outdure ranges
- Standard construction details

## FOR MORE INFORMATION

CALL NZ: 0800 77 88 77  
AUSTRALIA: 1800 722 465  
WWW.OUTDURE.COM



© 2018 Outdure International Ltd. All Rights Reserved.



[www.outdure.com/qwickbuild](http://www.outdure.com/qwickbuild)